

## *Halodule wrightii* Shoal grass

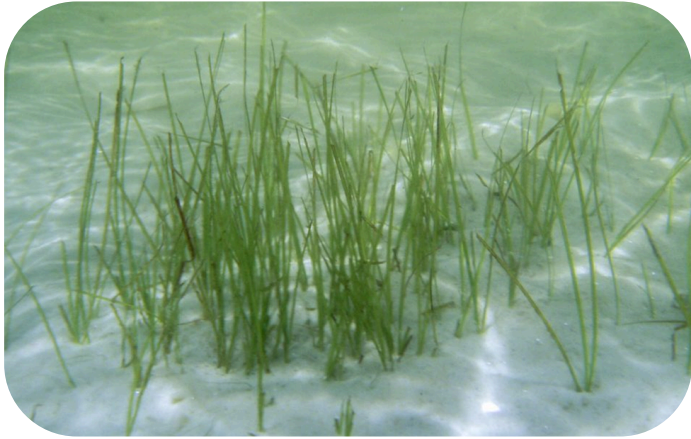


Image: SJRWMD

- Thin, flat, skinny blades
- Looks like a linguine noodle
- Most common species throughout the IRL

## *Thalassia testudinum* Turtle grass

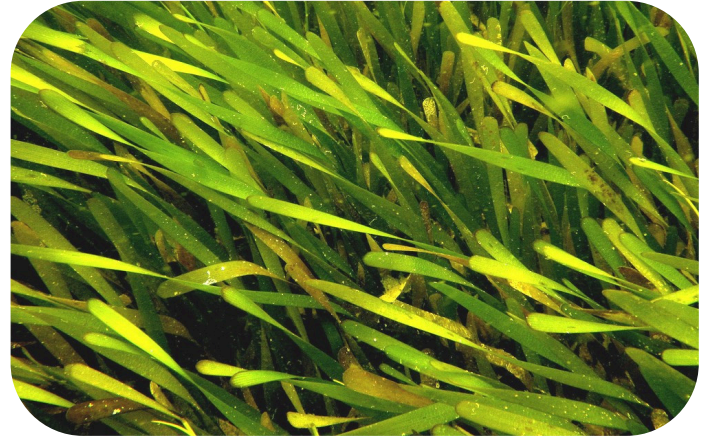


Image: FWC

- Broad, flat, long leaf blades
- Looks like a wide ribbon or fettuccini noodle
- Found in southern IRL

## *Syringodium filiforme* Manatee grass



Image: SJRWMD

- Round/cylindrical, long blades
- Looks like a spaghetti noodle
- Found throughout the IRL, more in south

## *Ruppia maritima* Widgeon grass



Image: SJRWMD

- Branching structure with thin, flat blades
- Found throughout the IRL
- Common in areas with lower salinity



## *Halophila engelmannii* Star grass

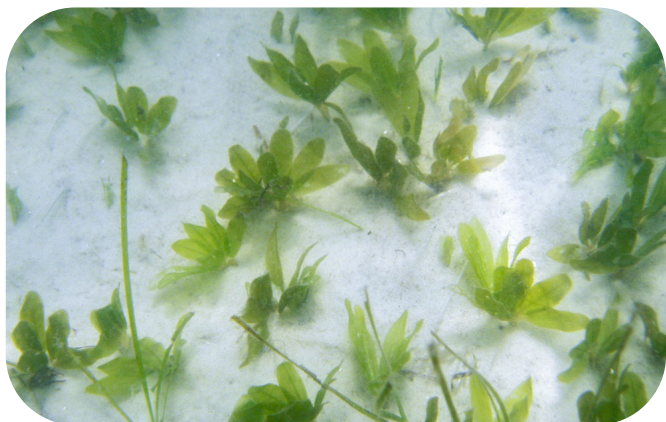


Image: SJRWMD

- 4-8 short blades (1 inch long) grow from a single stem in a star pattern
- Most common in northern IRL

## *Halophila decipens* Paddle grass

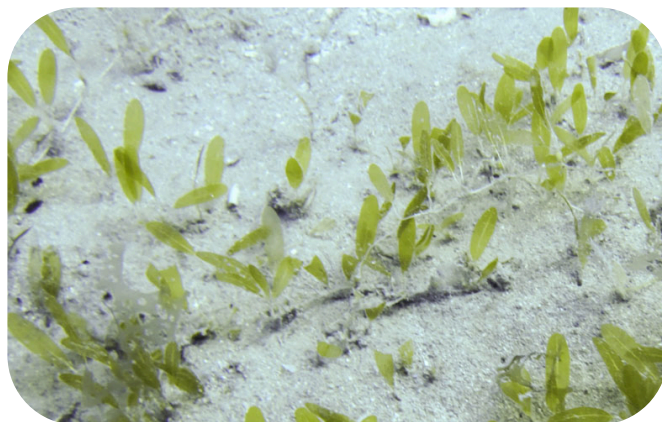


Image: SJRWMD

- 1-inch, broad, rounded leaves
- Found in southern IRL

## *Halophila johnsonii / ovalis* Johnson's seagrass

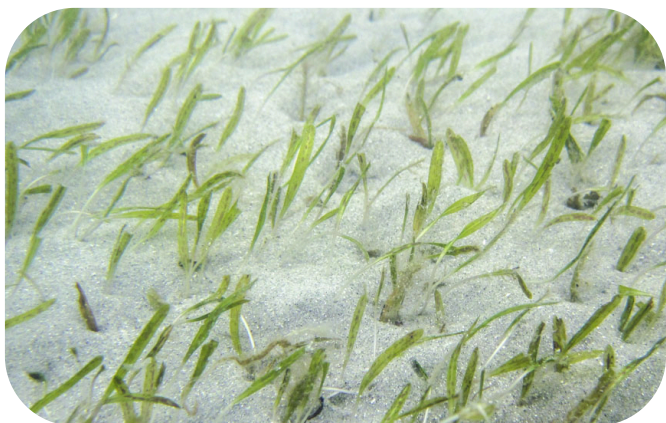


Image: SJRWMD

- Short (1-2 inch) paired leaves
- Found in southern IRL
- In Seagrass Spotter as *Halophila ovalis*

## *Caulerpa prolifera* Green algae - not a seagrass!



Image: FAU Harbor Branch

- Bright green, oval, 4-inch ruffled blades
- Throughout the IRL, more in central/south
- Report as an Absence Sighting in the app

